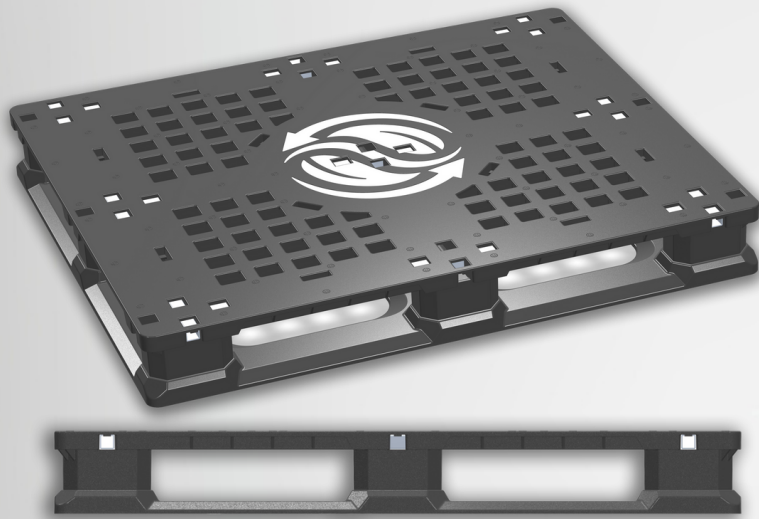




GREEN  
CURRENT  
SOLUTIONS

## 48 X 40 PALLET

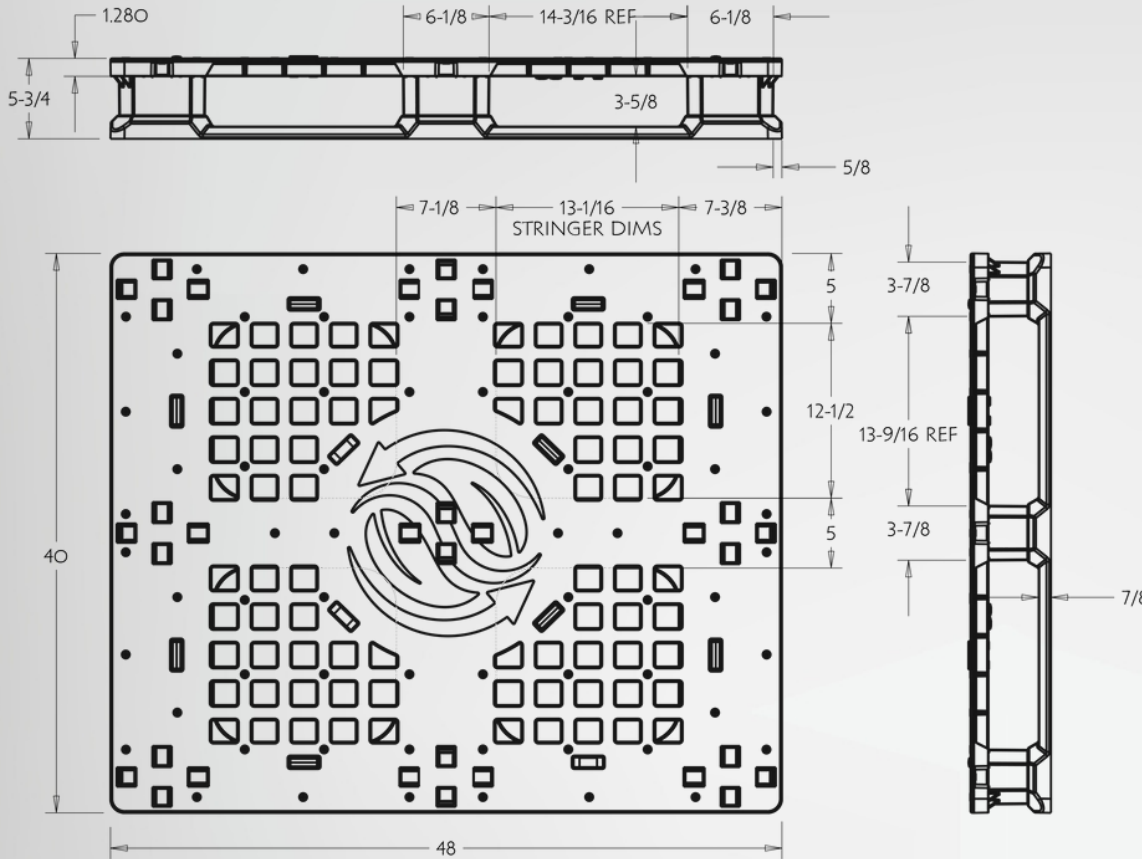


	No Supports	w/Glass Filled Nylon Supports	w/Galvanized Supports
<b>Static</b>	15,600	16,950	20,250
<b>Dynamic</b>	4,750	5,575	7,403
<b>Racking</b>	1,000	2,468	3,258
<b>Weight</b>	49 LBS	53 LBS	65 LBS
<b>Company Logo</b>	Single Color - No charge per truckload order of pallets		

All nominal load capacities have been calculated with a safety factor of 2x and are based on evenly distributed loads at room temperature (68 degrees F/20 degrees C) and our tests, founded on ISO 8611 testing and performance requirements. Please contact a GCS sales representative to discuss your specific needs. As each product application and environmental condition is unique, pallet performance may differ from the stated specifications, and the customer assumes all risks associated with the actual use of the pallet. GCS reserves the right to change any of the stated information without prior notice.

### PALLET FEATURES

- ✓ **Heavy-duty**—built for reuse!
- ✓ High pressure injection molded using **100% recycled HDPE and ocean-bound plastic**
- ✓ 64 HAPPY FACE grip dots on top deck to **reduce product slippage**
- ✓ **100% recycled and 100% recyclable**
- ✓ **Stackable and conveyable**, with picture frame base
- ✓ **4-way entry** with **large fork openings** to minimize damage
- ✓ **Weather and chemical resistant**--HDPE is ideal for cold and frozen environments
- ✓ **Easily sanitized**
- ✓ **Reinforced legs** to provide excellent impact resistance
- ✓ **Bar Code** on every pallet for asset tracking and visibility



**540 pallets can fit in a 53' trailer**

## PALLET OPTIONS

- **Glass-filled nylon or galvanized steel beam inserts** for maximum loading and racking capacities
- **12-Tall or short grommets** to reduce slippage
  - Short grommets extend beyond the bottom of upper deck to reduce slippage on fork trucks
  - Tall grommets extend beyond the bottom of upper deck to reduce slippage on fork trucks and raise above top deck to lessen product movement
- **Color Available:** BLACK
- **Hot Stamping of custom logo** FREE OF CHARGE for single color. Multicolor hot stamp available for additional charge. All stamps will be on 48" side-center leg
- **RFID asset tracking**
- **Fire Retardant**
  - Currently pursuing UL 2335 Certification



**GREEN  
CURRENT  
SOLUTIONS**

**CONTACT US**

**greencurrentsolutions.com**



**Chad Pregracke**

President



309.236.0740



chad@greencurrentsolutions.com



401 12th Avenue  
East Moline, IL 61244